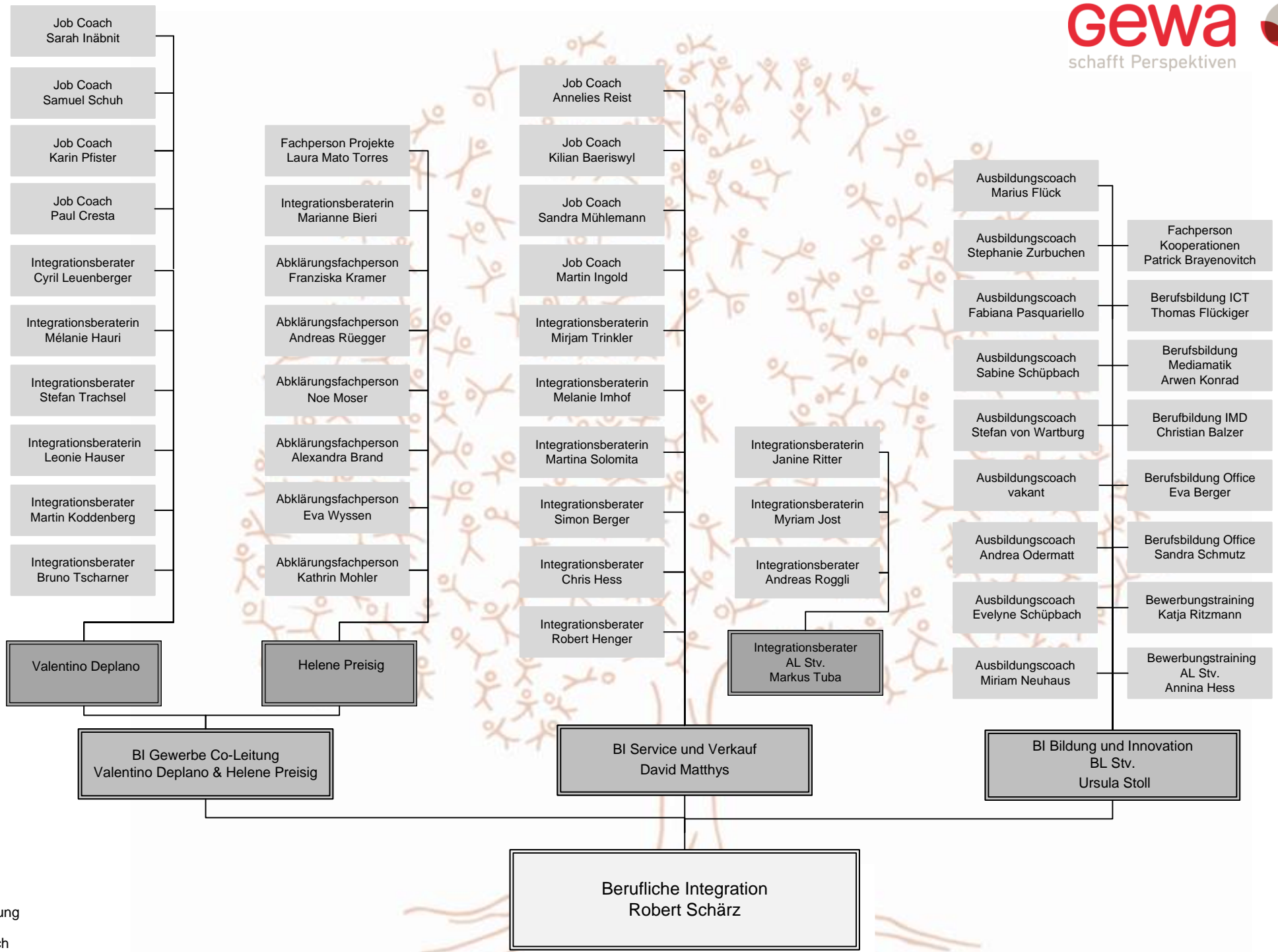
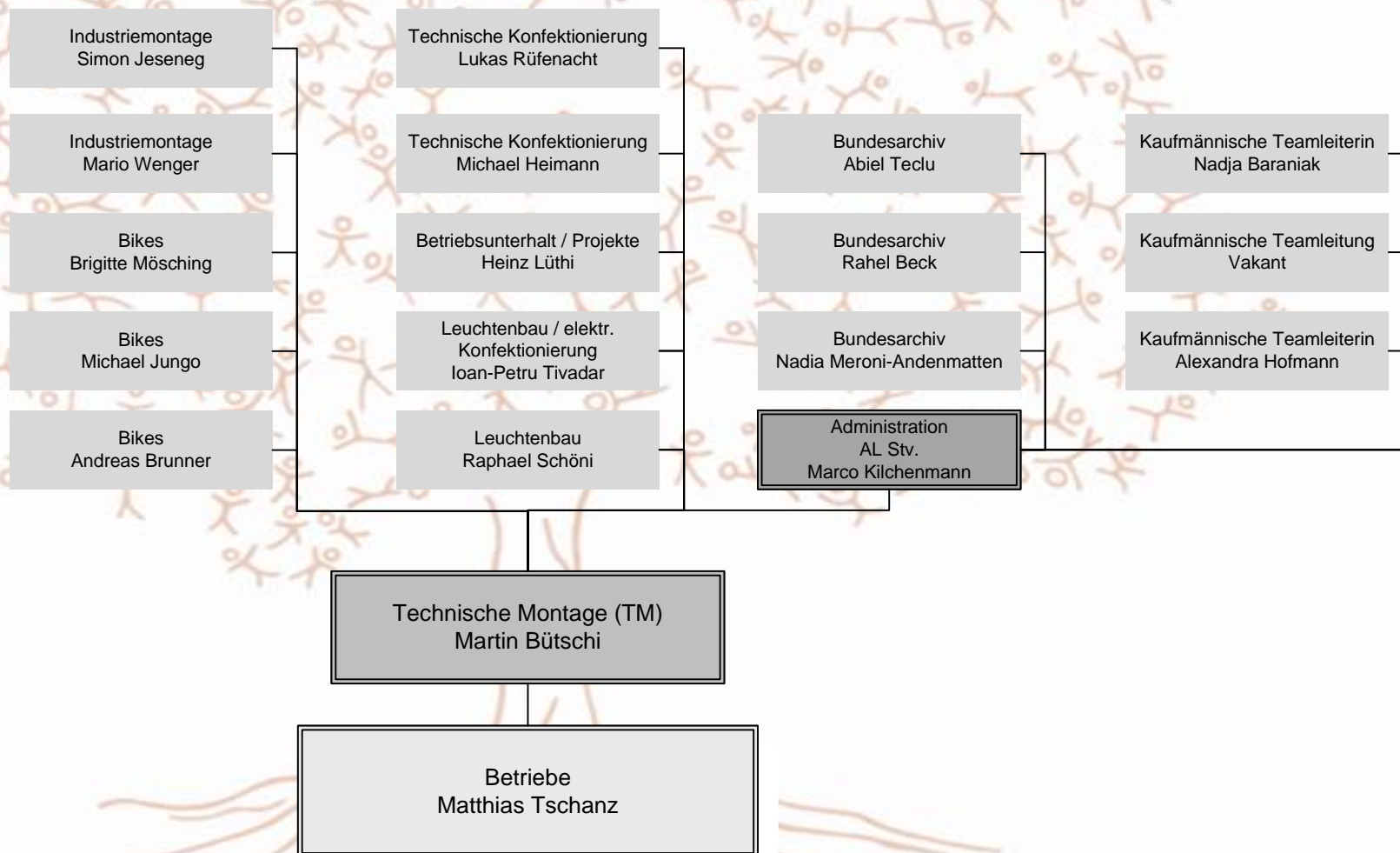


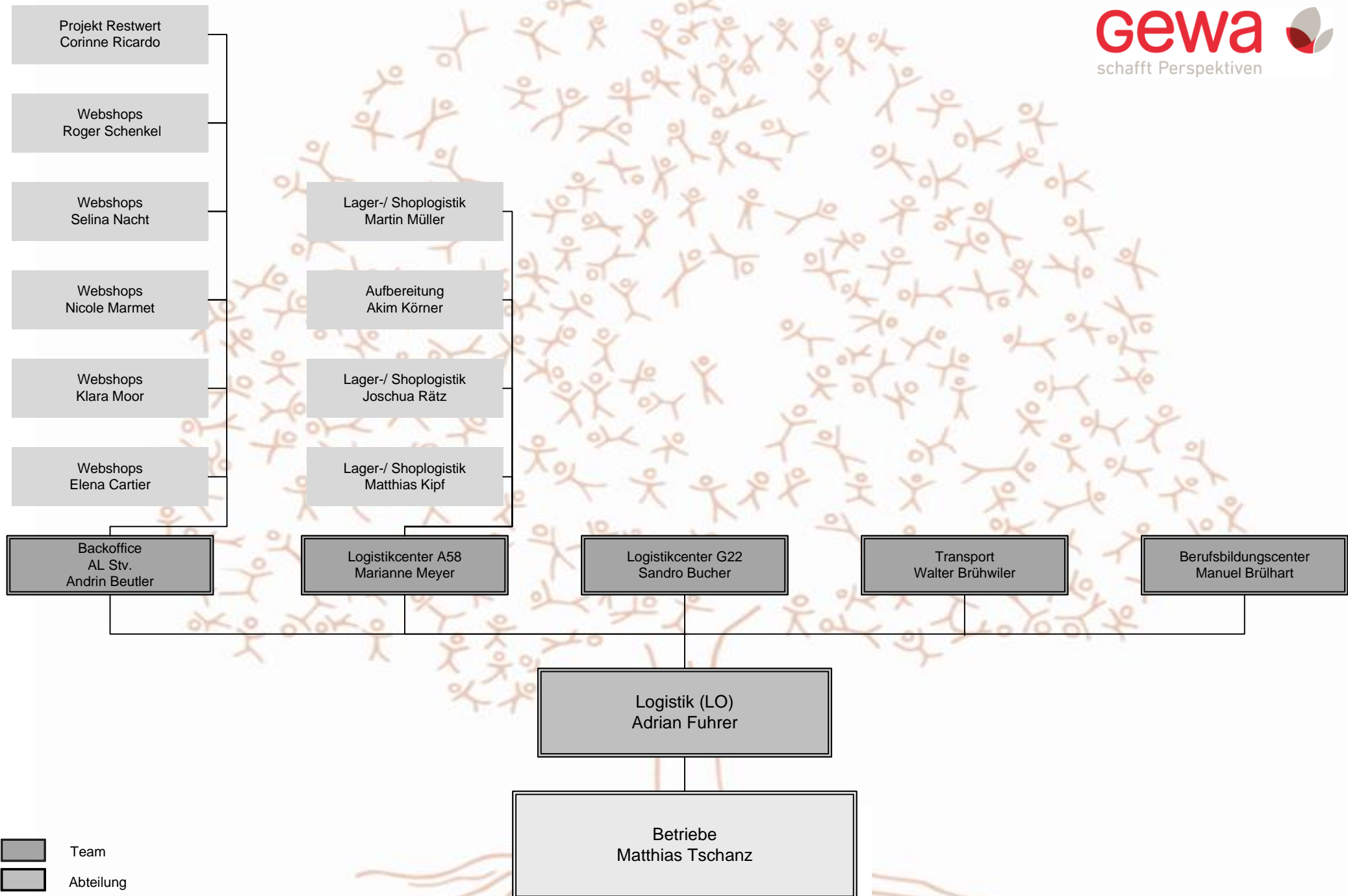
- ⚙️ Stv. Vorsitzender der GL
- ★ Verantwortlicher Sicherheit
- ♦️ Verantwortlicher Qualitätsmanagement
- Verantwortlicher Umweltmanagement



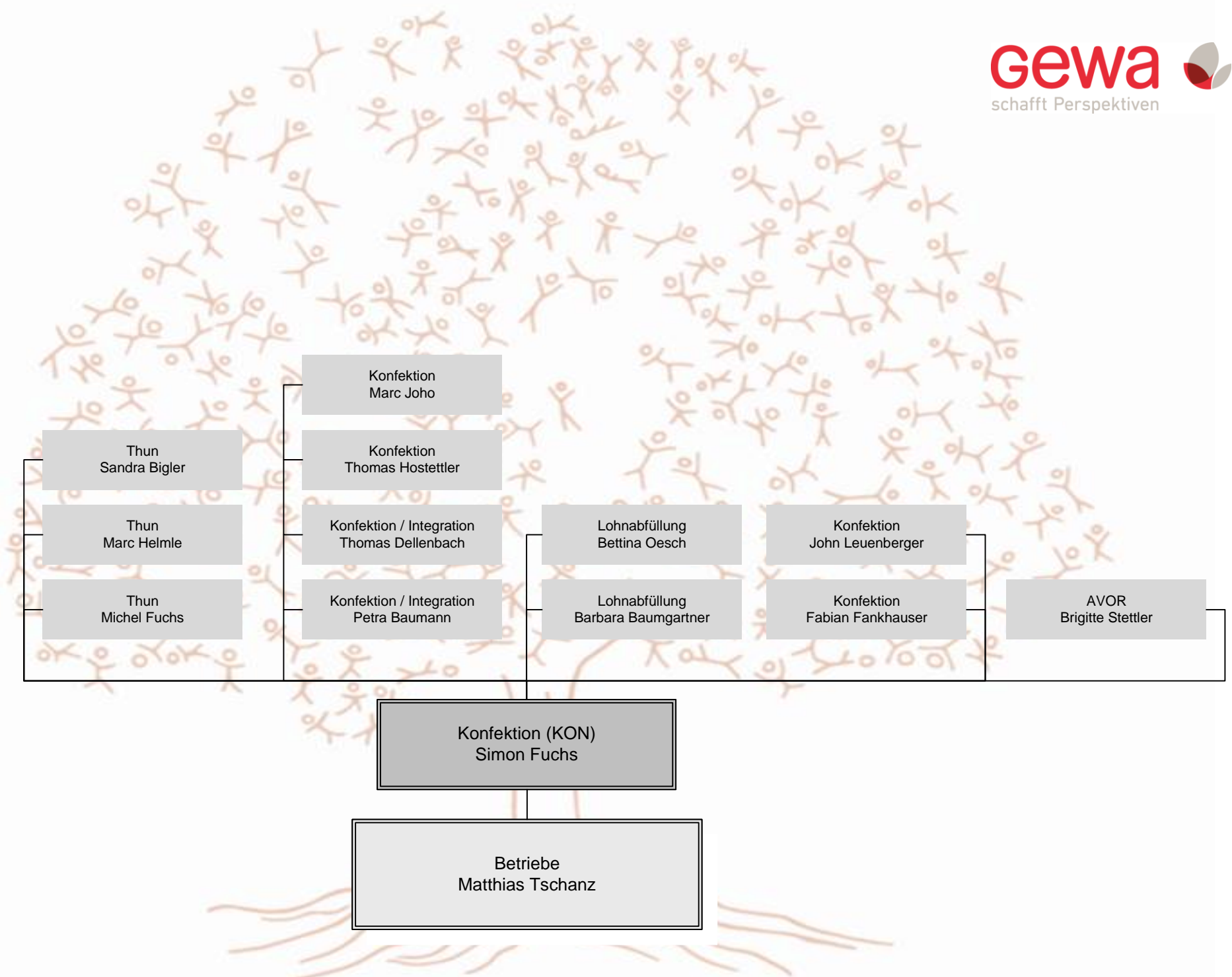
- Team
- Abteilung
- Bereich



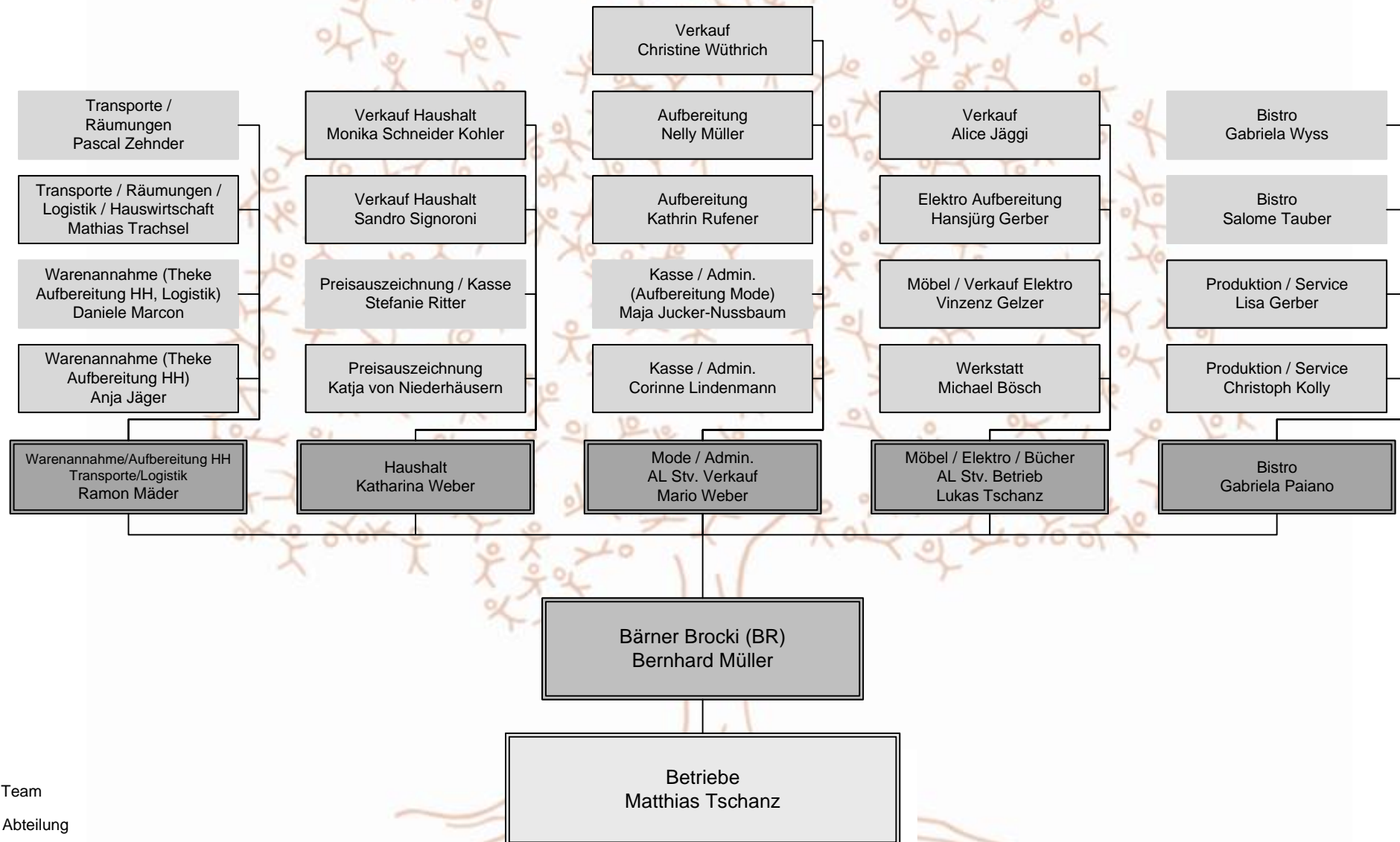
- Team
- Abteilung
- Bereich

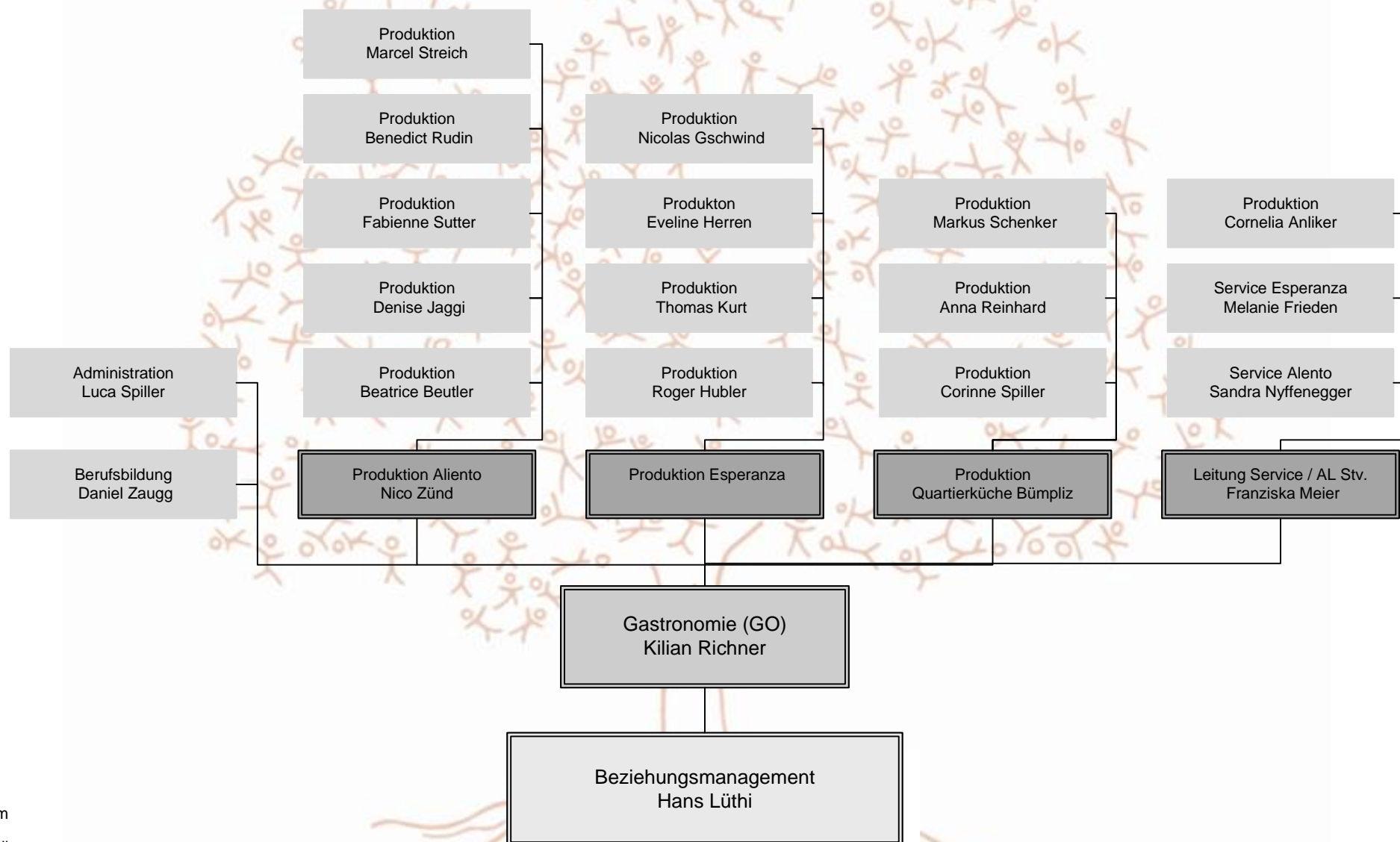


-  Team
-  Abteilung
-  Bereich

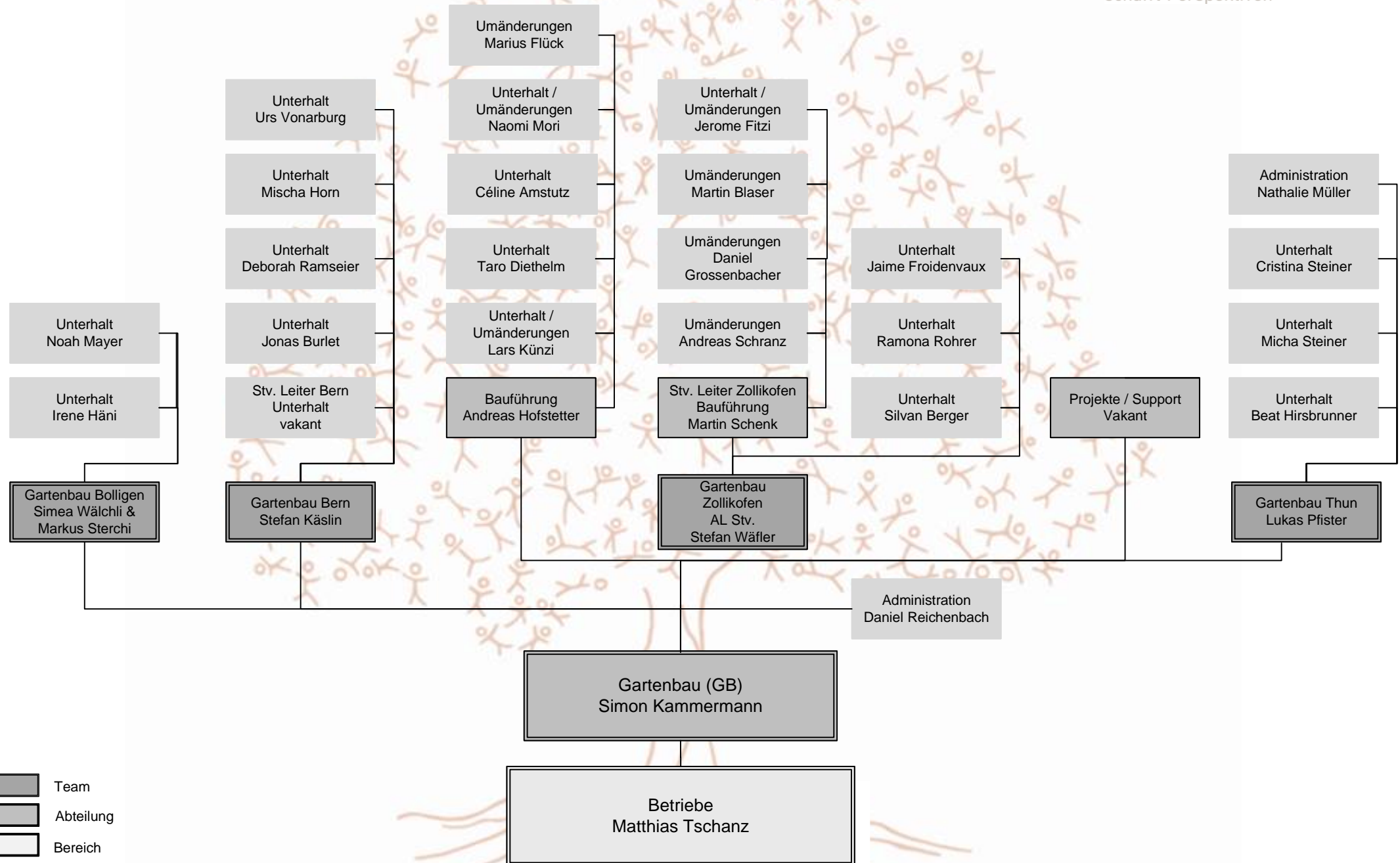


- Team
- Abteilung
- Bereich

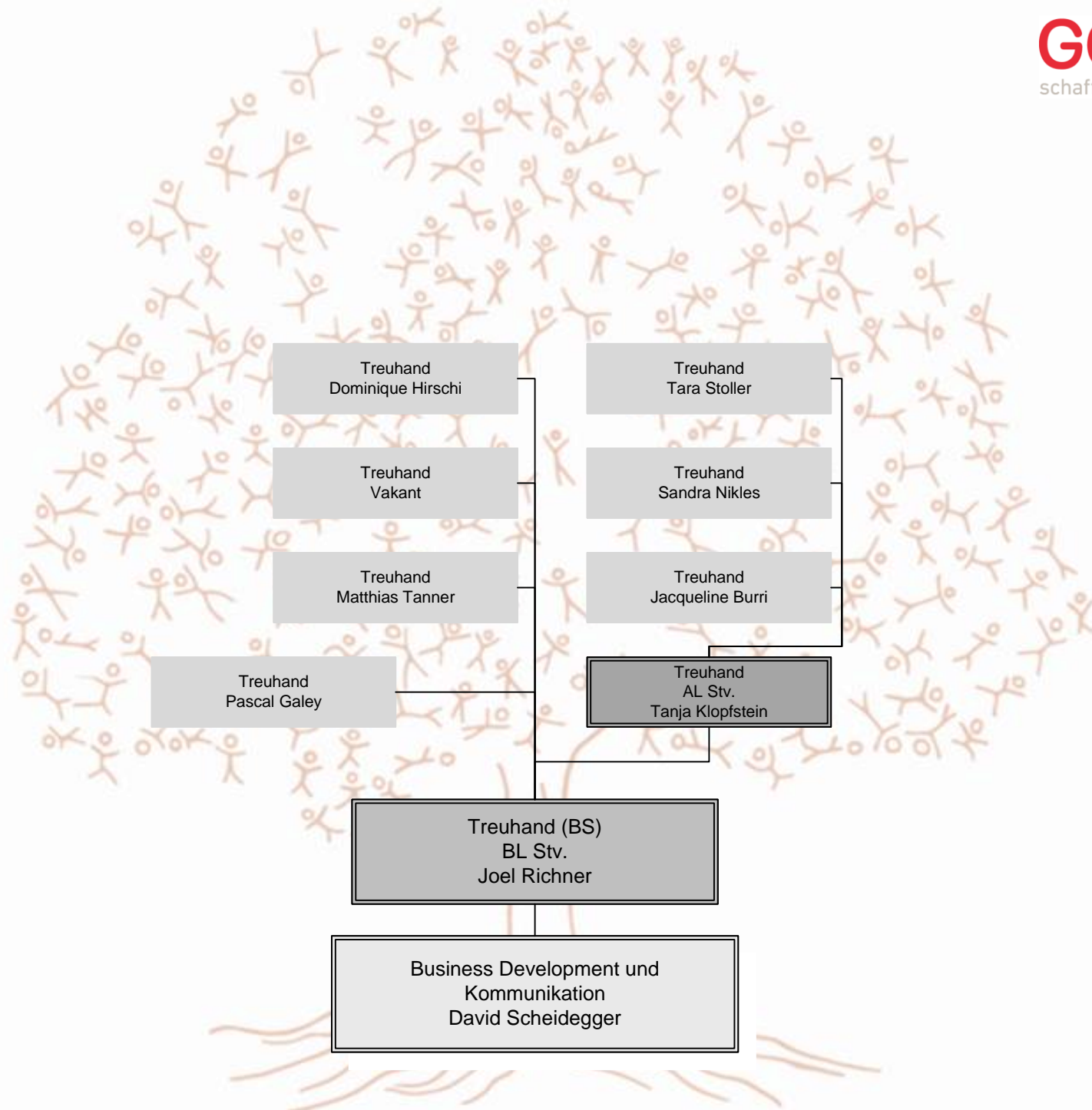



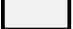


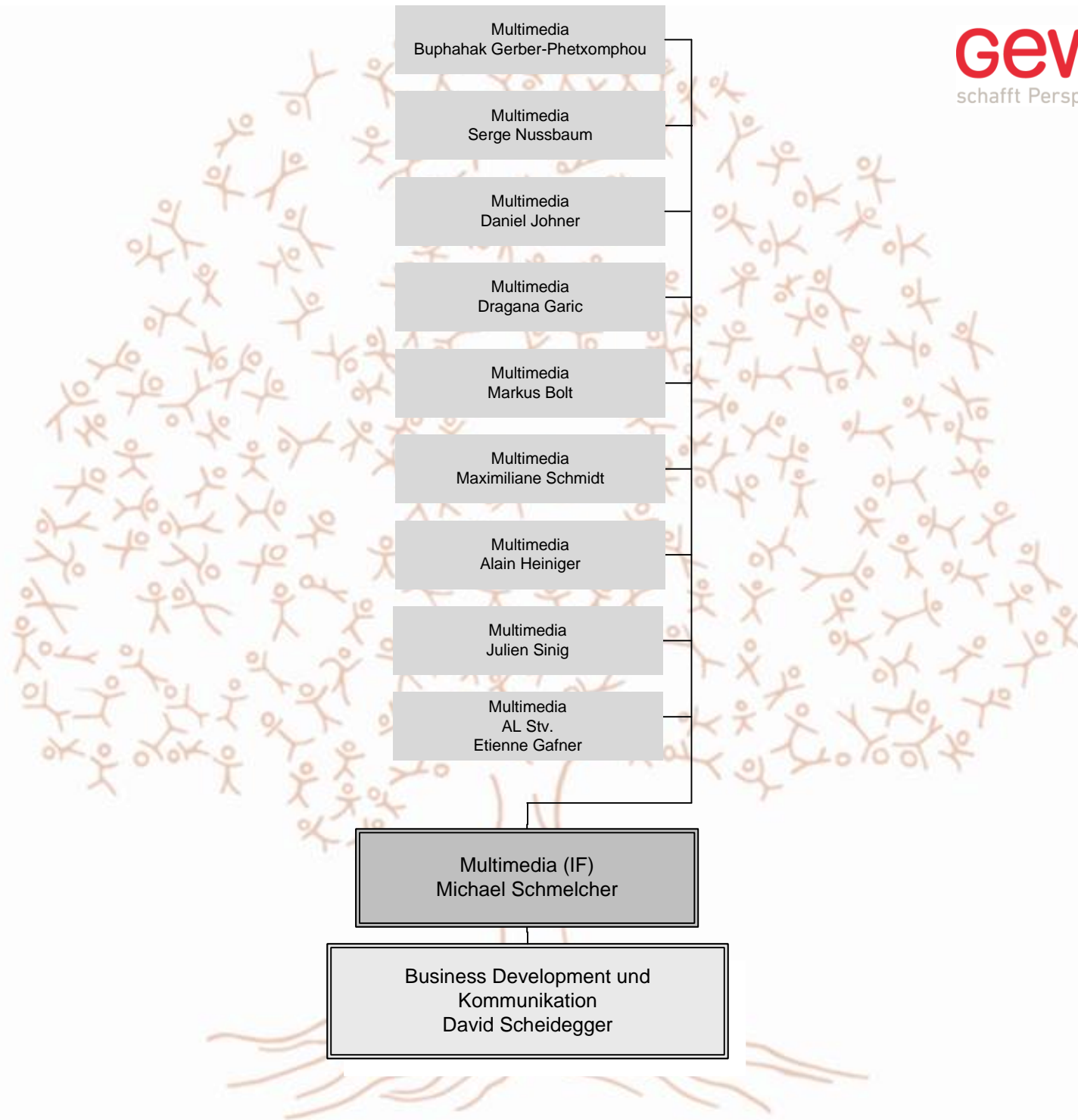
- Team
- Abteilung
- Bereich



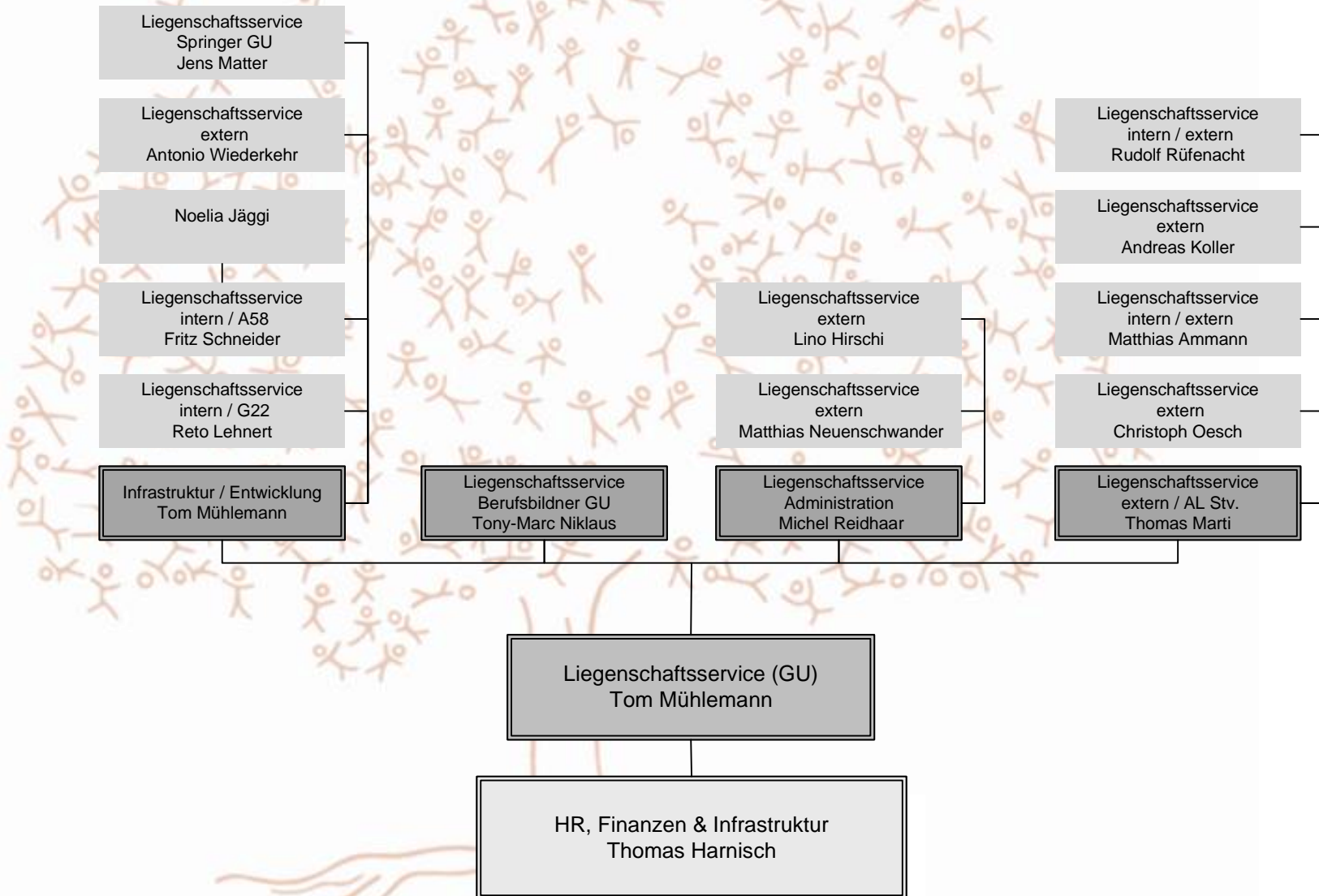




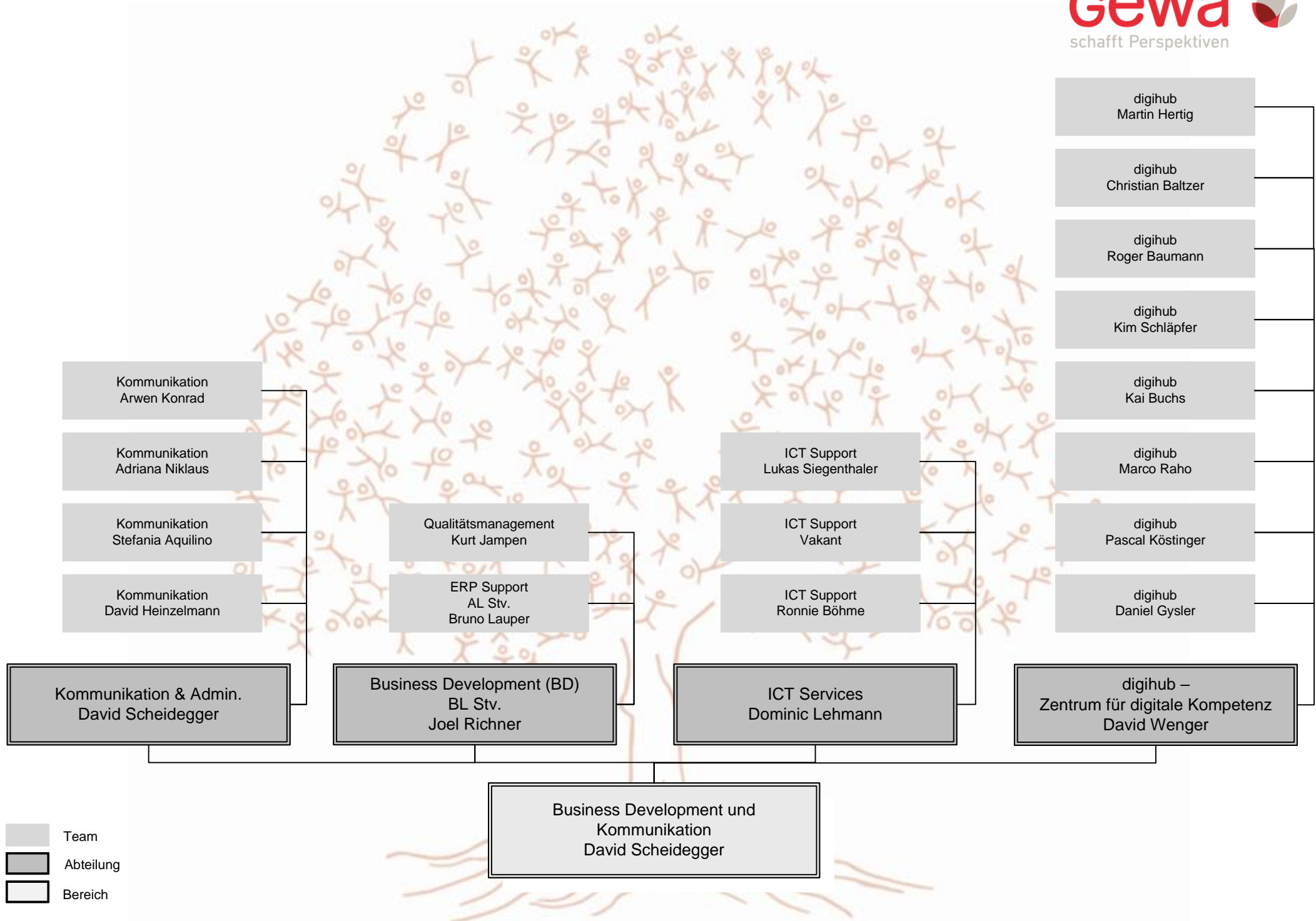
-  Team
-  Abteilung
-  Bereich



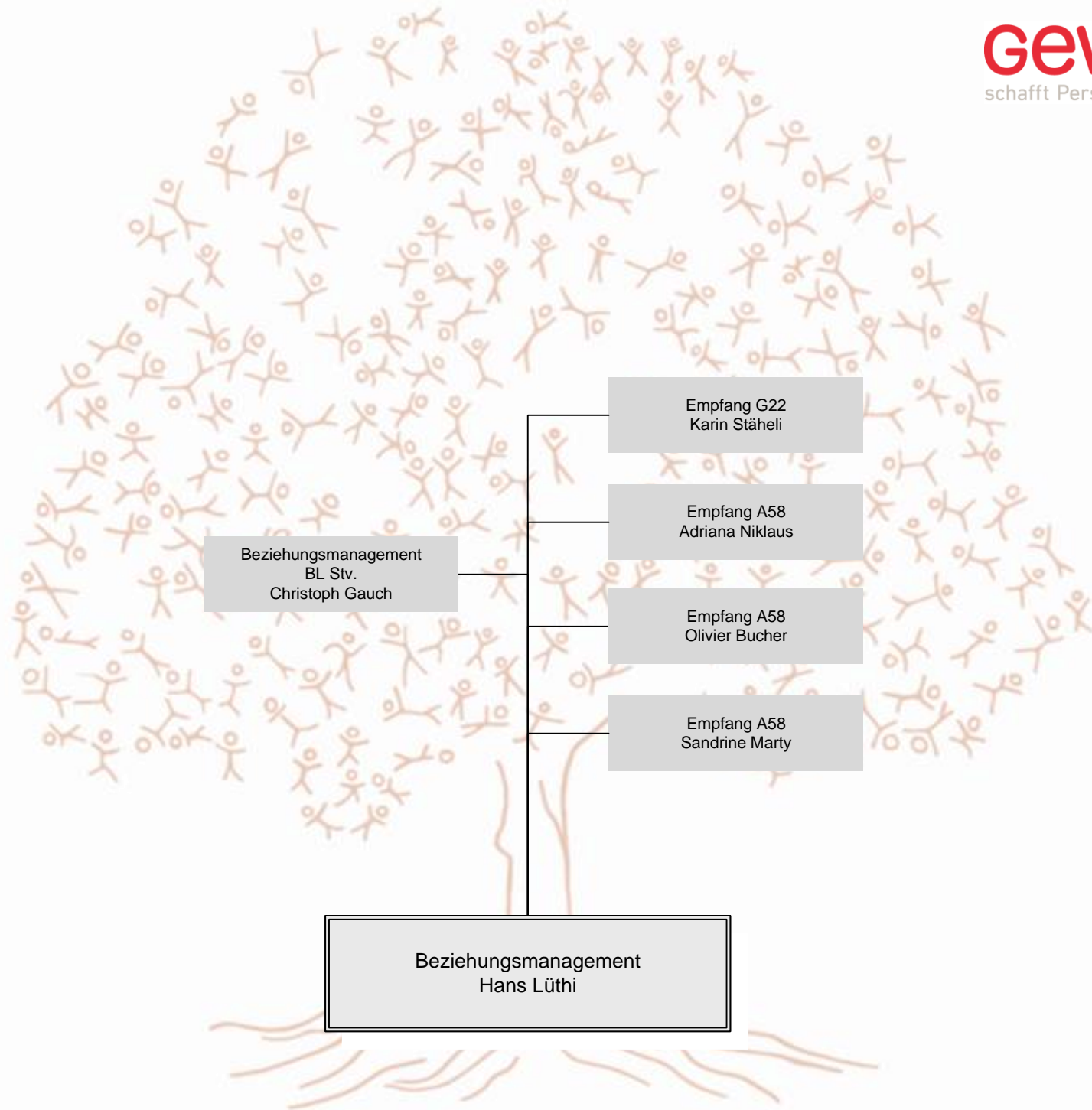
-  Team
-  Abteilung
-  Bereich



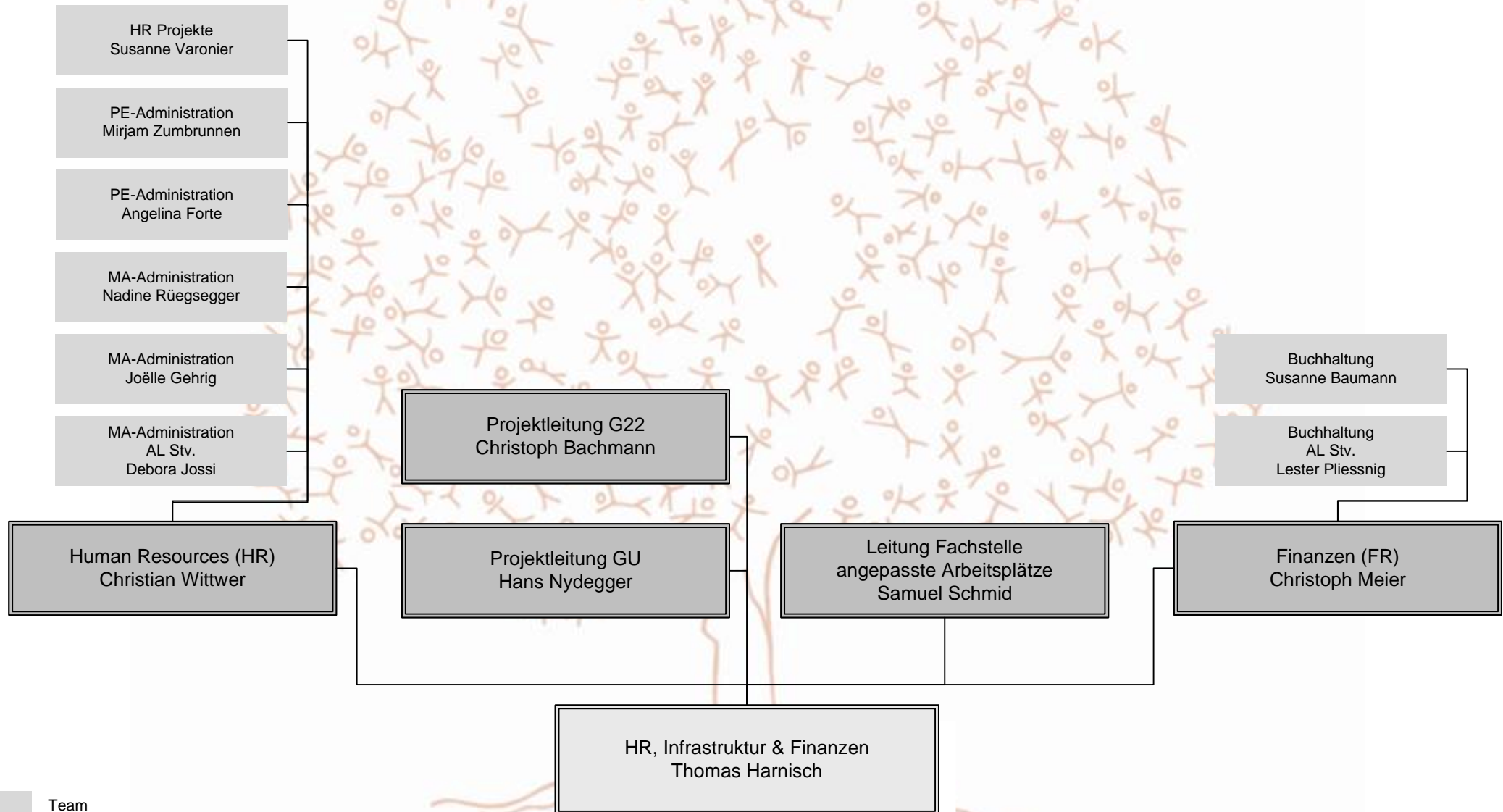
- Team
- Abteilung
- Bereich



- Team
- Abteilung
- Bereich



- Team
- Abteilung
- Bereich



-  Team
-  Abteilung
-  Bereich